

32 (26.9%)  
D3.0 P5.5



33 (22.6%)  
D3.0 P6.0



34 (16.6%)  
D3.0 P7.0



36 (29.6%) ★  
D4.0 P7.0



36-A (40.2%) ★  
D4.0 P6.0



37 (28.7%)  
D4.5 P8.0



39 (37.4%) ★  
D4.5 P7.0



*select*  
58 (35.4%) ★  
D5.0 P8.0



59 (22.6%) ★  
D5.0 P10.0



*select*  
60 (40.2%) ★  
D6.0 P9.0



61 (50.9%) ★  
D6.0 P8.0



*select*  
62 (32.6%) ★  
D6.0 P10



63 (22.6%) ★  
D6.0 P12



64 (40.2%)  
D6.4 P9.6



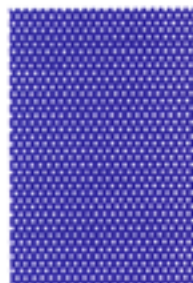
65 (11.7%)  
D6.0 P22.0 (45度角手切り)



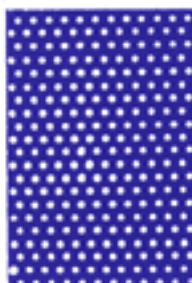
66 (57.9%)  
D6.0 P7.5



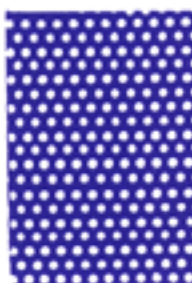
5 (19.0%) ★  
D0.5 P1.09



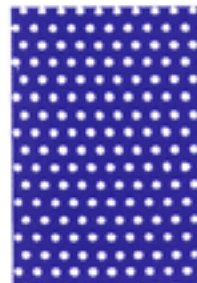
8 (22.6%) ★  
D1.0 P2.0



10 (27.0%)  
D1.2 P2.2



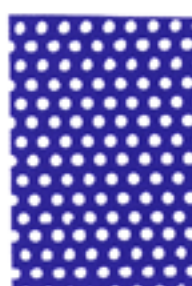
13 (24.6%)  
D1.3 P2.5



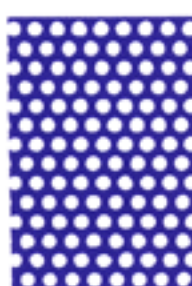
15 (14.1%)  
D1.5 P5.0 (45度角キドリ)



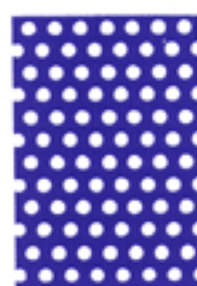
16 (22.6%) ★  
D1.5 P3.0



19 (40.2%) ★  
D2.0 P3.0



21 (29.6%) ★  
D2.0 P3.5



21-A (15.5%)  
D2.0 P4.5 (並列)



21-B (22.6%)  
D2.0 P4.0



22 (7.4%)  
D2.0 P7.0



24 (46.2%) ★  
D2.5 P3.5



24-B (35.4%) ★  
D2.5 P4.0



25 (22.6%)  
D2.5 P5.0



30 (50.9%) ★  
D3.0 P4.0



31 (32.6%) ★  
D3.0 P5.0



67 (44.3%)  
D7.0 P10



68 (30.8%)  
D7.0 P12



69 (20.2%)  
D6.0 P12.7

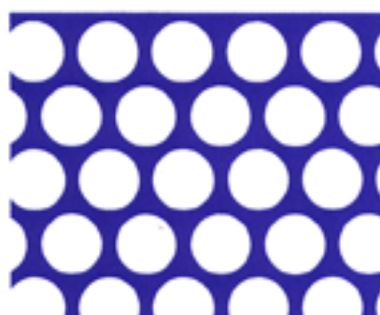


70 (17.3%)  
D7.0 P16.0



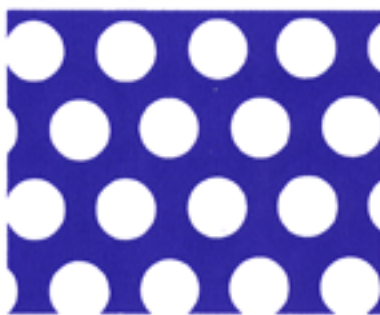
select

80 (57.9%) ★  
D8.0 P10



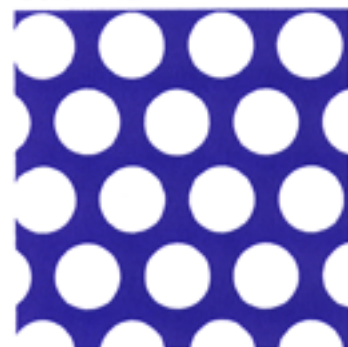
select

81 (40.2%) ★  
D8.0 P12



select

90 (50.9%)  
D9.0 P12



91 (26.3%)  
D9.0 P22 (45度角トリ)

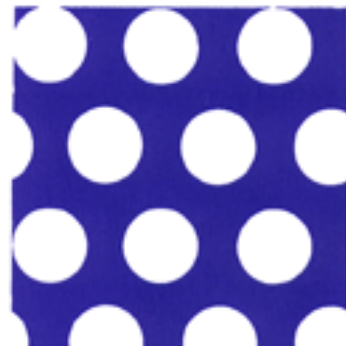


91-A (28.3%)  
D9.0 P15.0 (並列)



select

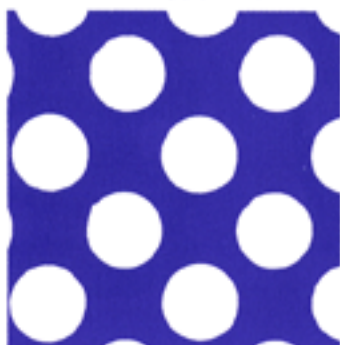
92 (40.2%) ★  
D10 P15



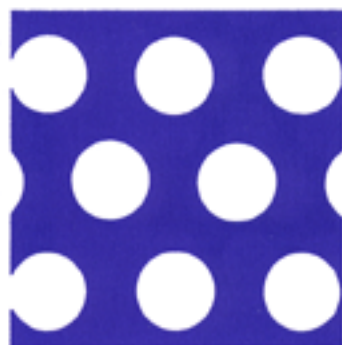
93 (57.9%) ★  
D10 P12.5



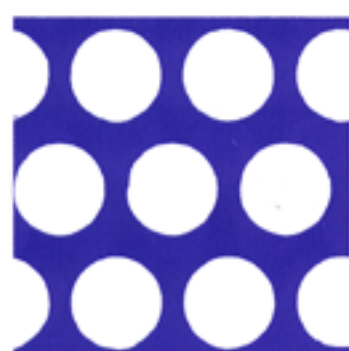
93-B (39.2%)  
D10 P20 (45度角手付)



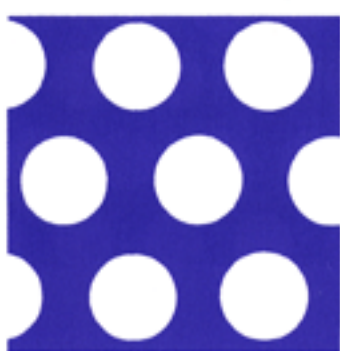
94 (38.0%)  
D11 P17



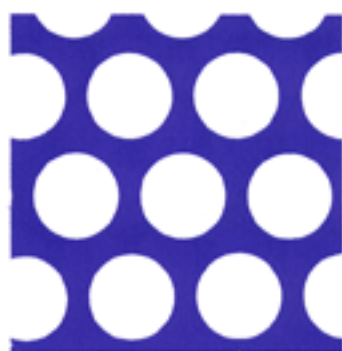
94-A (57.9%)  
D12.0 P15.0



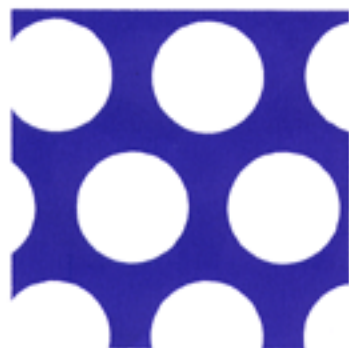
*select*  
94-B (40.2%) ★  
D12 P18



95 (61.1%)  
D11.5 P14



*select*  
95-B (50.9%) ★  
D15 P20



96 (52.5%) ★  
D16 P21



97 (40.2%) ★  
D20 P30



99 (50.9%) ★  
D30 P40



98 (62.8%)  
D25 P30



99-A (57.9%)  
D40 P50



99-B  
50 ø

